

March 25, 2025
La Marchea: Puerto Princesa

Presented by
**Kaluha Realty and
Development Corp.**

Project Profile



Table of Contents

Story About Us	03
A Sense Of Community	05
Message From The Chairman	06
Mission & Vision	07
Meet Our Team	08
House Models	09
Natural Amenities	14
Location	15
Contact Us	16

Inspired by the Palawan Hornbill (*Anthracoceros
marchei*) a large forest bird endemic to the
Philippines), it is situated in Sicsican, Puerto Princesa
City, surrounded by lush greenery and a tight-knit
agricultural neighborhood called “Agri-Hood”.



Story About Us

At La Marchea, homeowners get to enjoy the best of three worlds:

- Modern Living in Nature
- Sustainable Neighborhood
- Marketplace for Economic Growth

March 25, 2025

La Marchea: Puerto Princesa

Presented by

Kaluha Realty and Development Corp.

03

Welcome to your greener and better life.

Let La Marchea be the place for you to build a
prosperous life as you live in your own piece of paradise.



A Sense of Community

At La Marchea, we encourage community-building and sustainable living. Our charming marketplace provides a warm and inviting atmosphere, allowing you to not only shop and dine but also support local businesses. By patronizing these establishments, you contribute to the growth of thriving agriculture and local marketplace vendors, supporting economic development making the community prosper together.

Immerse yourself in an environment that fosters a sense of community and belonging—a place where you can connect with like-minded individuals and form lasting friendships.

Together, we can create a vibrant, resilient, & thriving community that enriches the lives of everyone.

Message From Our Chairman

At La Marchea, we understand the heart of returning home to the Philippines. When you come back, where will you go?

We've created a community that fosters what we call a cooperative. Why? Because we will be the ones to support and empower you. We're here to guide, ensuring that you can set up your own businesses in the best way possible—through a cooperative.

At La Marchea, we don't just provide homes; we offer a life filled with possibilities—where lifestyle, productivity, and growth go hand in hand. It's time to elevate the lives of our people and to come home to your own piece of paradise.

Our dream? To see fewer and fewer OFWs, with more choosing to build their lives back home.

This community we're building, La Marchea, is the answer to the challenges faced by our OFWs.

Let's embrace this holistic approach to transform lives and create a bright future for everyone in our community.

Live life, naturally.

Mission

To build a quality, upmarket eco-homes for the Filipino families, both local and abroad, in the forest city of Puerto Princesa, Palawan

Mission & Vision



Vision

Our vision is to create homes that promote community and preservation of mother nature.

Meet Our Team

Master Planner

**SC&A Architects
Planners**

Project Manager

**Design
Coordinates Inc.**

Landscape
Architecture

**Anterra
Studio**

House Designer

**Barchan +
Architecture**

Developer

**Kaluha Realty
Development Corp.**

Branding

TOFU Labs

Engineering Designer

Meinhardt

Interior Design

G+T Design



Architect's Perspective

House Models



Our homes are built with passion and purpose, made sustainably in harmony with nature.

La Marchea offers four distinct house models, each carefully designed to meet your specific needs and preferences. For those seeking ample space, our Single Attached model boasts a generous area of 91 sqm, providing plenty of room for comfortable living. If you prefer a shared living space, our Duplex model offers a spacious layout of 90 sqm, allowing you to enjoy the benefits of a connected yet independent lifestyle. If you appreciate the charm of a townhouse, we have two options available. Townhouse 1 features a 63 sqm lot area, providing a cozy and inviting atmosphere for you to call home. On the other hand, Townhouse 2 offers a slightly smaller lot area of 50 sqm, perfect for those who value efficiency without compromising on style.

March 25, 2025

La Marchea: Puerto Princesa

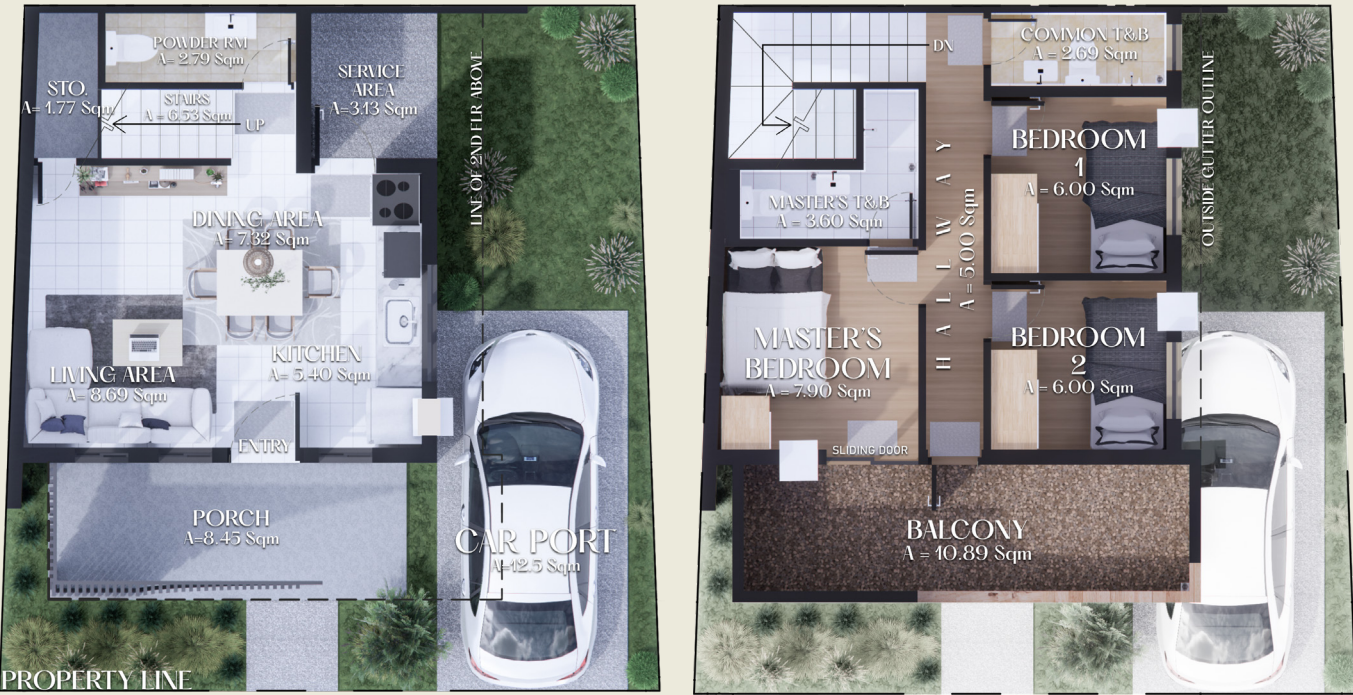
Presented by

Kaluha Realty and Development Corp.

09

Single Attached

Boasts a generous area of 98.66 sqm, providing plenty of room for comfortable living.



Architect's Perspective

La Marchea

Single Attached

98.66 sqm

Duplex

A spacious 90 sqm unit, allows you to enjoy the benefits of a connected yet independent lifestyle.



Architect's Perspective



Architect's Perspective

La Marchea

Duplex

90 sqm

Townhouse 67

A 67 sqm lot area, providing a cozy and inviting atmosphere for you to call home



Architect's Perspective



Architect's Perspective

La Marchea

Townhouse 67

67 sqm

Townhouse 50

A slightly smaller lot area of 50 sqm, perfect for those who value efficiency without compromising on style.



Architect's Perspective

La Marchea

Townhouse 50

50 sqm

Natural Amenities

01 Marketplace

Purchase fresh produce, household items, and various other goods, while also promoting the local economy by providing a platform for local vendors and farmers to sell their products.

02 Bahay Kubo Garden

Discover the joy of harvesting fresh produce, where you can cultivate your own nutritious vegetables.

03 Herbal Botanika Space

An herb garden provides a fragrant and therapeutic space to explore

04 Lagoon

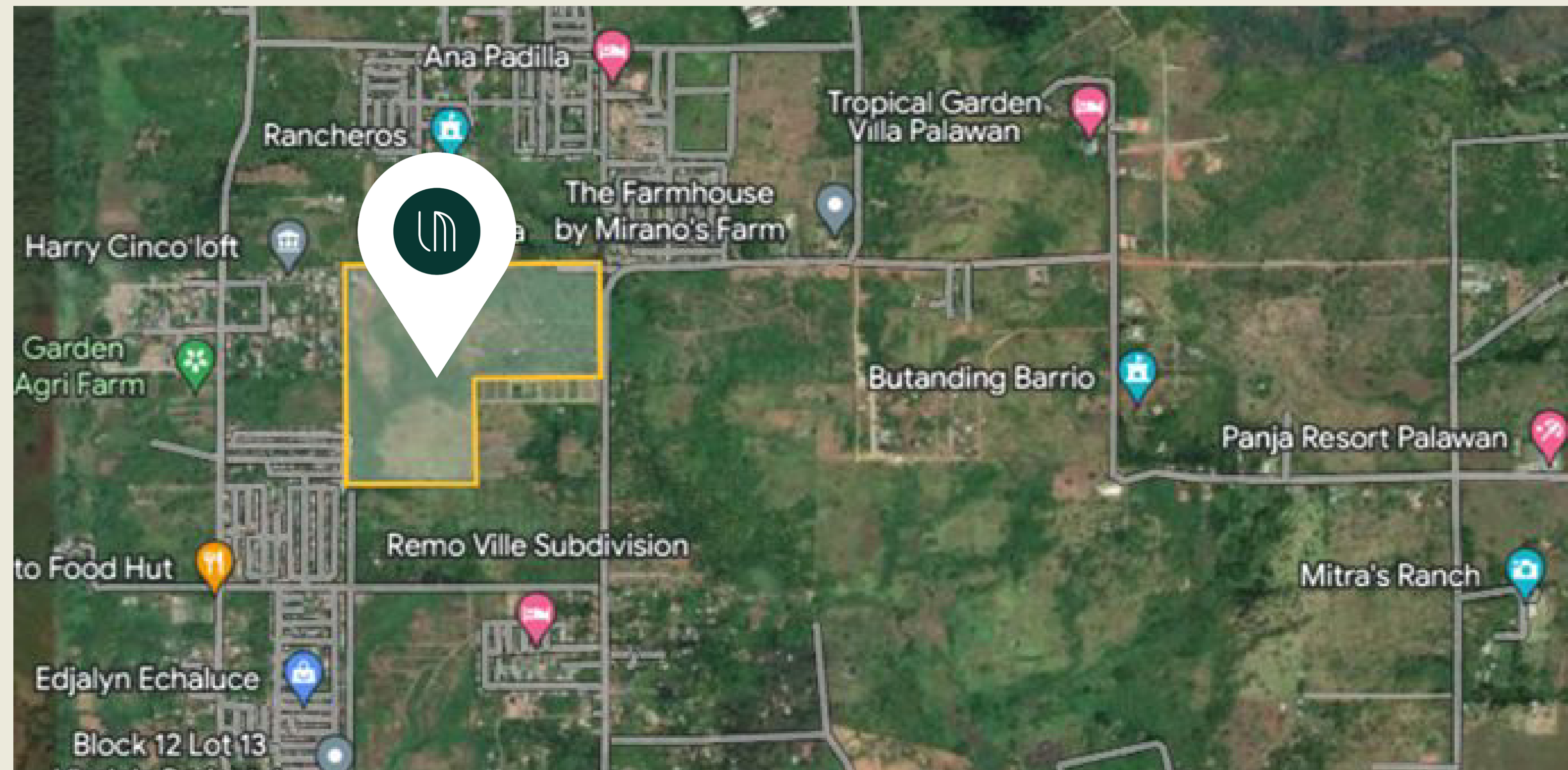
Adds a touch of tranquility, inviting you to unwind and find solace in its serene waters.



Architect's Perspective

Location

Barangay Sicsican in Puerto Princesa City, Palawan is 11km away from the city proper. This close proximity allows for easy access to various amenities such as schools and hospitals and the airport.



Contact Us



La Marchea

Email: inquiries@lamarchea.ph	Website: lamarchea.ph	Puerto Princesa Marketing Office:	Manila Office:
Contact Numbers:	LS No. 0003626	Unit 206-207 Green Building, PPC SJD Center	Unit 508, Admiralty Building, Madrigal Business Park,
(02) 860 4585 +63 962 566 8217	Date Approved: Feb 20, 2025	132 National Highway, San Pedro	Ayala Alabang, Muntinlupa 1780